

# Laryngeal and Esophageal Products



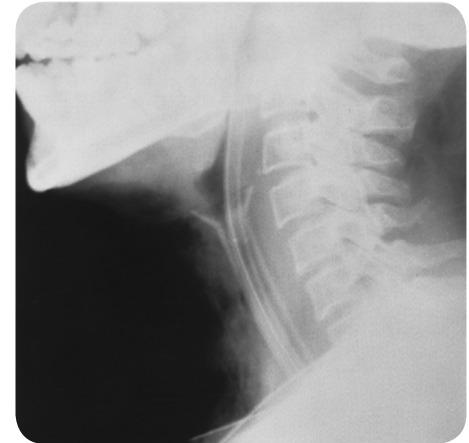
## Montgomery® Salivary Bypass Tube

The constant bathing by saliva to the tissues altered by surgery, infection, or radiation therapy is a prime factor in retarding the progress of healing and fistula closure. The Montgomery® Salivary Bypass Tube directs the saliva into the distal esophagus and allows for spontaneous closure of the fistula, or at least permits the tissue to recover sufficiently to be an improved recipient for more formidable measures such as repair using pedicled skin flap tissue. A feeding tube may be inserted through the salivary bypass tube. Impending fistulae and strictures may be prevented by tube placement alone or following bougienage dilation.



### Intended Use

To stent repair of cervical esophageal and hypopharyngeal strictures or to facilitate the management of fistulae resulting from a variety of causes including surgery, radiation, advanced malignancy, trauma, and ingestion of caustic agents



### Supplied

Sterile  
For single use  
1 Tube, 1 IFU per carton

### Features

- Implant-grade silicone
- Non-adherent smooth surface
- Available in clear or radiopaque material

Size	REF		Dimensions (mm)		
	Clear	Radiopaque	A	B	C
8	322080	322080R	33	191	8
10	322100	322100R	35	191	10
12	322120	322120R	37	191	12
14	322140	322140R	39	191	14
16	322160	322160R	41	191	16
18	322180	322180R	43	191	18
20	322200	322200R	45	191	20

