



SPEED MEETS PRECISION

EmboCube™ Embolisation Gelatin

**FINALLY, YOU CAN DELIVER GELATIN FOAM
CONSISTENTLY THROUGH A MICROCATHETER***

EmboCube is the only gelatin foam that is precisely measured, cut and loaded into a syringe for faster preparation and targeted delivery.



S P E E D • P R E C I S I O N • C O N S I S T E N C Y™

EmboCube™

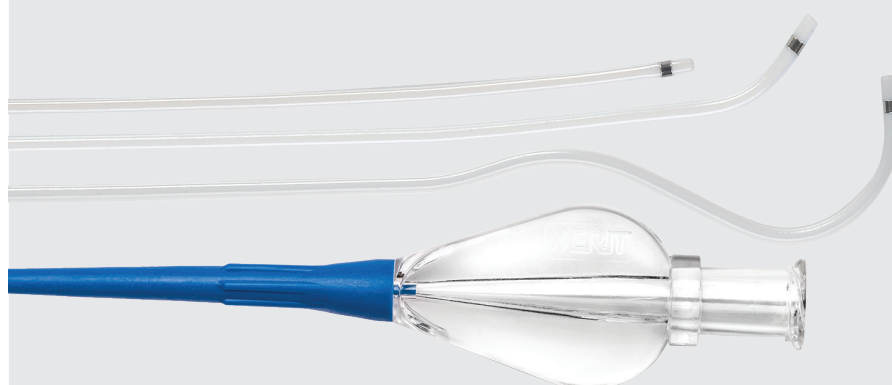
Embolisation Gelatin

DELIVERY

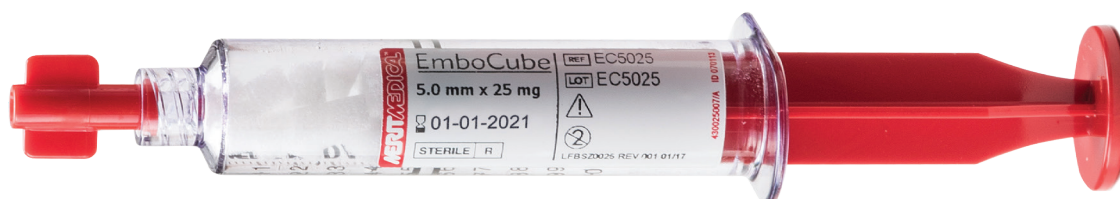


- Green colour coded EmboCube can be delivered through microcatheters with a ≥ 0.024 " (0.62 mm) inner diameter.

Compatible with:



Maestro® Microcatheter,
2.8F - 2.8F and 2.9F - 2.9F



- Red colour coded EmboCube can be delivered through catheters with a ≥ 0.040 " (1.02 mm) inner diameter.

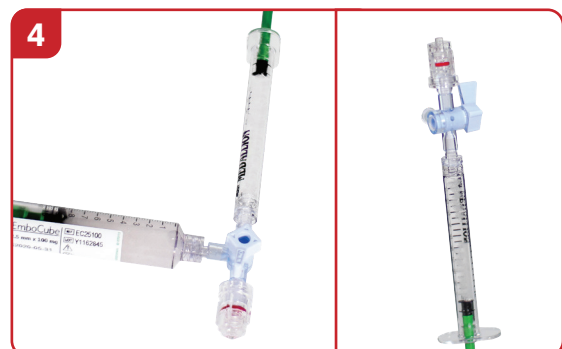
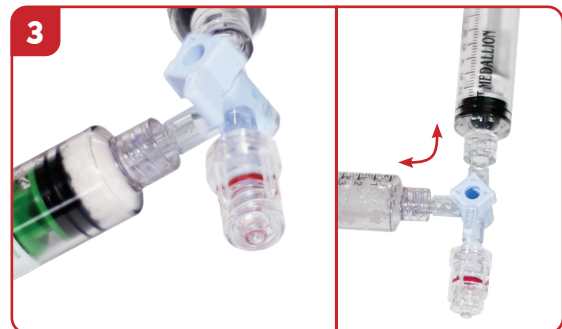
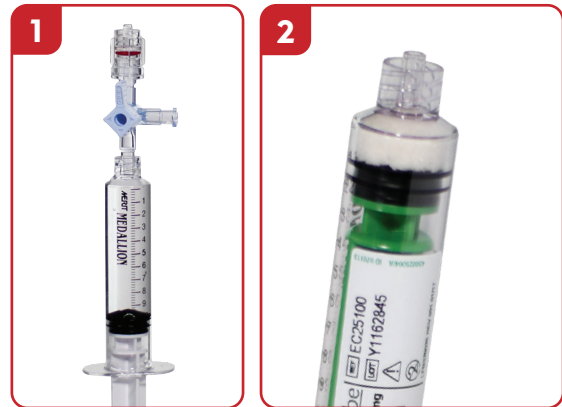
PREPARATION & ADMINISTRATION INSTRUCTIONS



SUPPLIES NEEDED:

- 10 mL syringe filled with 5 mL 0.9% NaCl and 5 mL contrast
- EmboCube Syringe
- 3-way stopcock
- 1 mL or 3 mL injection syringe

1. Take an empty 10 mL syringe and fill it with 5 mL of contrast and 5 mL of 0.9% NaCl and connect it to a 3-way stopcock. Remove any air in the saline/contrast syringe and 3-way stopcock.
2. Firmly compress the EmboCubes with the syringe plunger to remove air from the EmboCubes.
3. Attach the EmboCube syringe to the side port of the 3-way stopcock. Slowly make two to five transfers back and forth between the syringes to fully hydrate the EmboCubes.
4. Remove the empty 10mL syringe from the 3-way stopcock and replace it with a 1 mL or 3 mL injection syringe. Draw the EmboCube saline/contrast mixture into the injection syringe slowly to minimise the potential of introducing air into the system. Purge all air from the system prior to injection.
5. Attach a delivery catheter to the 1 mL or 3 mL injection syringe. Inject the EmboCube saline/contrast mixture from the injection syringe into the catheter under fluoroscopic visualisation using a slow pulsatile injection while observing the contrast flow rate. Continue injecting EmboCube until the desired embolisation endpoint is reached.
6. Upon completion of the embolisation, remove the catheter while maintaining gentle suction so as not to dislodge any residual EmboCube Embolisation Gelatin still within the catheter lumen.



EmboCube™

Embolisation Gelatin


ORDERING INFORMATION

CATALOGUE NUMBER	HYDRATED SIZE	WEIGHT	RECOMMENDED INJECTION SYRINGE	MINIMUM CATHETER ID	COLOUR CODE
EC2550*	2.5 mm	50 mg	1 mL	0.024" (0.62 mm)	●
EC25100*	2.5 mm	100 mg	1 mL	0.024" (0.62 mm)	●
EC5050	5.0 mm	50 mg	3 mL	0.040" (1.02 mm)	●
EC50100	5.0 mm	100 mg	3 mL	0.040" (1.02 mm)	●

* Can fit through a microcatheter with a ≥ 0.024 " (0.62 mm) inner diameter.

Packaged 5/box.



 Biosphere Medical, S.A.
Parc des Nations - Paris Nord 2
383 rue de la Belle Etoile
95700 Roissy en France
France

CE 2797

Contact your Merit Medical sales representative for more information or visit www.merit.com/embocube.

Before using, refer to Instructions for Use for indications, contraindications, warnings, precautions and directions for use.



Understand. Innovate. Deliver.™

merit.com

Merit Medical Systems, Inc.
1600 West Merit Parkway
South Jordan, Utah 84095
1.801.253.1600
1.800.35.MERIT

Merit Medical Europe, Middle
East, & Africa (EMEA)
Amerikalaan 42, 6199 AE
Maastricht-Airport
The Netherlands
+31 43 358 82 22

Merit Medical Ireland Ltd.
Parkmore Business Park West
Galway, Ireland
+353 (0) 91 703 733