



**TECHNOLOGY
REIMAGINED.**

SPLASHWire™

Hydrophilic Steerable Guide Wire

IT'S TIME TO REIMAGINE YOUR GUIDE WIRE.

A decade – the time it took to build a superior guide wire and to rival competing greatness. The Merit SplashWire combines optimum lubricity, exceptional torque response, and enhanced visibility, helping you achieve the successful outcomes you expect, even in the most complex cases.

TRAVERSE DIFFICULT LESIONS.

Achieve Successful Clinical Outcomes.

Resilient Hydrophilic Coating

Provides a constant fluid layer on wire surface for enhanced lesion crossability.

Nitinol Core

Delivers true 1:1 torque response for smooth navigation in tortuous vessels!

Tungsten-Infused Polymer Jacket

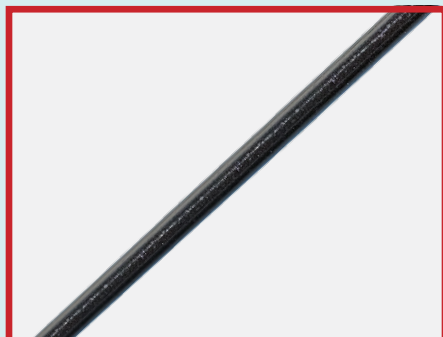
Combined with the nitinol core wire, boosts visualization under fluoroscopy for accurate positioning.

OPTIONS FOR PROCEDURAL CHALLENGES



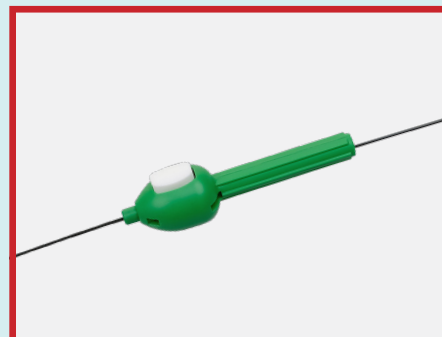
ANGLED AND STRAIGHT TIPS

For added flexibility when you need it.



STIFF CONFIGURATION

When more support and pushability are desired.

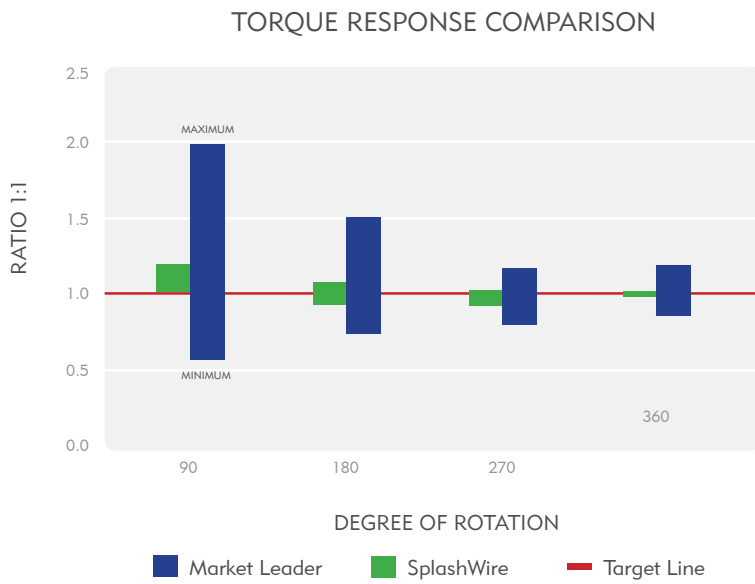


SEADRAGON2® TORQUE DEVICE*

May be used to enhance manipulation of the guide wire tip.

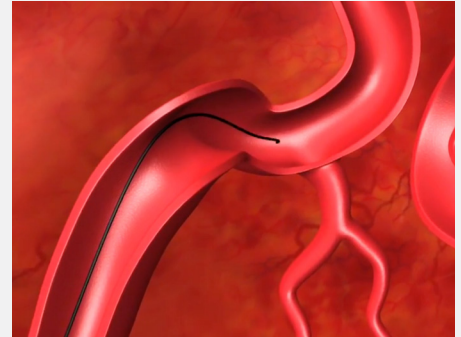
PROVEN TO DELIVER BETTER TORQUE RESPONSE¹

Comparative torque testing shows the Merit SplashWire consistently meets the 1:1 torque target, unlike the market leader's exaggerated torque response. As seen in the chart below, bars closest to the target line indicate true one-to-one torqueability.

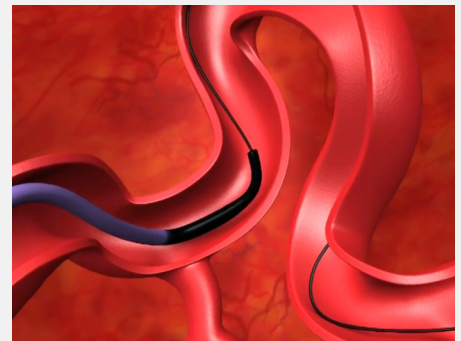


OPTIMUM LUBRICITY FOR IMPROVED ENDURANCE¹

The Merit SplashWire's resilient hydrated gel coating delivers constant lubricity that's superior to the market-leading hydrophilic guide wire.¹



Kink-resistant nitinol core allows wire to maintain shape while navigating tortuous anatomy.



Compatible with other devices for excellent trackability through challenging vasculature.



Lubricious surface reduces friction and insertion forces when crossing complex lesions.

COMBINE MERIT PRODUCTS. CREATE PROCEDURAL SOLUTIONS.

Choose from a wide selection of Merit products that are compatible with the Merit SplashWire. Each works to provide you with the complete procedural solutions you need to achieve better patient outcomes.

DIAGNOSTIC

ACCESS

Prelude IDEAL™
Hydrophilic Sheath
Introducer



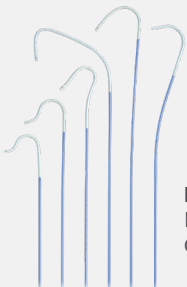
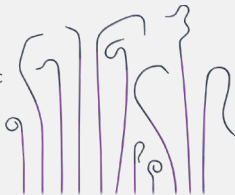
CLOSURE DEVICES

PreludeSYNC EVO™
Radial Compression Device



DIAGNOSTIC CATHETERS

Impress®
Peripheral Angiographic
Catheters



Performa®
Diagnostic Peripheral
Catheters

INTERVENTIONAL

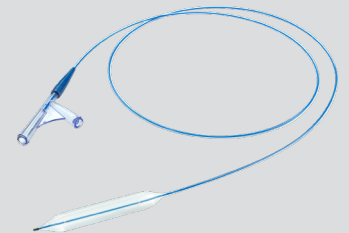
GUIDING CATHETERS

ConcierGE®
Guiding Catheters



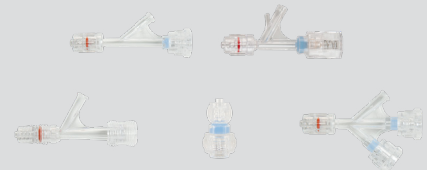
PTA BALLOONS

Advocate™
0.035" PTA Catheter

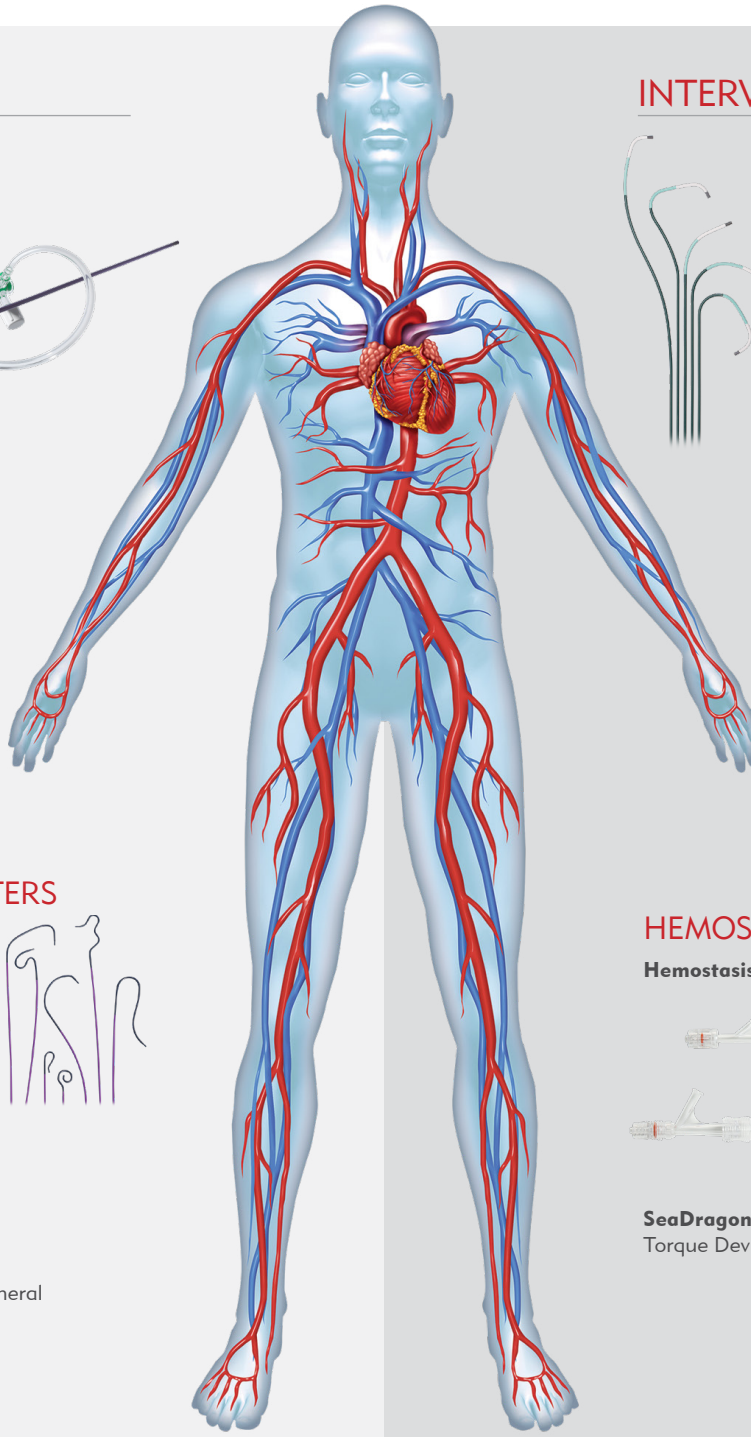


HEMOSTASIS

Hemostasis Valves & Accessories

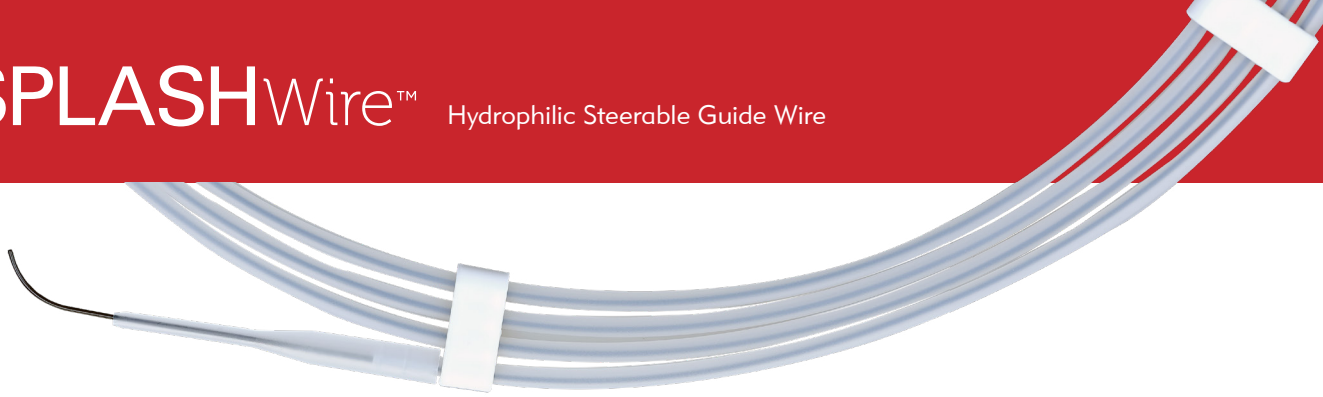


SeaDragon 2
Torque Device



SPLASHWire™

Hydrophilic Steerable Guide Wire



HOW TO READ THE MERIT SPLASHWIRE PART NUMBER

MSWSTDA35260EX:	<u>MSW</u>	<u>STD</u>	<u>A</u>	<u>35</u>	<u>260</u>	<u>EX</u>
	Merit Splash Wire	Standard Body Stiffness	Angled Tip Shape	0.35" Outer Diameter	260 cm Total Length	Exchange Length

ORDERING INFORMATION

CATALOG NUMBER	CONFIGURATION	TIP SHAPE	DIAMETER (O.D.)	LENGTH	DESCRIPTION
0.035" STANDARD ANGLED					
MSWSTDA3580	Standard	Angled Tip	0.035" (0.89 mm)	80 cm (31.5")	
MSWSTDA35150	Standard	Angled Tip	0.035" (0.89 mm)	150 cm (59")	
MSWSTDA35180	Standard	Angled Tip	0.035" (0.89 mm)	180 cm (71")	
MSWSTDA35220	Standard	Angled Tip	0.035" (0.89 mm)	220 cm (87")	
MSWSTDA35260EX	Standard Exchange	Angled Tip	0.035" (0.89 mm)	260 cm (102")	Exchange
0.035" STANDARD STRAIGHT					
MSWSTDS3580	Standard	Straight Tip	0.035" (0.89 mm)	80 cm (31.5")	
MSWSTDS35150	Standard	Straight Tip	0.035" (0.89 mm)	150 cm (59")	
MSWSTDS35180	Standard	Straight Tip	0.035" (0.89 mm)	180 cm (71")	
MSWSTDS35220	Standard	Straight Tip	0.035" (0.89 mm)	220 cm (87")	
MSWSTDS35260EX	Standard Exchange	Straight Tip	0.035" (0.89 mm)	260 cm (102")	Exchange
0.035" STIFF ANGLED					
MSWSTFA3580	Stiff	Angled Tip	0.035" (0.89 mm)	80 cm (31.5")	
MSWSTFA35150	Stiff	Angled Tip	0.035" (0.89 mm)	150 cm (59")	
MSWSTFA35180	Stiff	Angled Tip	0.035" (0.89 mm)	180 cm (71")	
MSWSTFA35220	Stiff	Angled Tip	0.035" (0.89 mm)	220 cm (87")	
MSWSTFA35260EX	Stiff Exchange	Angled Tip	0.035" (0.89 mm)	260 cm (102")	Exchange
0.035" STIFF STRAIGHT					
MSWSTFS3580	Stiff	Straight Tip	0.035" (0.89 mm)	80 cm (31.5")	
MSWSTFS35150	Stiff	Straight Tip	0.035" (0.89 mm)	150 cm (59")	
MSWSTFS35180	Stiff	Straight Tip	0.035" (0.89 mm)	180 cm (71")	
MSWSTFS35220	Stiff	Straight Tip	0.035" (0.89 mm)	220 cm (87")	
MSWSTFS35260EX	Stiff Exchange	Straight Tip	0.035" (0.89 mm)	260 cm (102")	Exchange
0.038" STANDARD ANGLED					
MSWSTDA3880	Standard	Angled Tip	0.038" (0.97 mm)	80 cm (31.5")	
MSWSTDA38120	Standard	Angled Tip	0.038" (0.97 mm)	120 cm (47.2")	
MSWSTDA38150	Standard	Angled Tip	0.038" (0.97 mm)	150 cm (59")	
MSWSTDA38180	Standard	Angled Tip	0.038" (0.97 mm)	180 cm (71")	
MSWSTDA38260EX	Standard Exchange	Angled Tip	0.038" (0.97 mm)	260 cm (102")	Exchange

CATALOG NUMBER	CONFIGURATION	TIP SHAPE	DIAMETER (O.D.)	LENGTH	DESCRIPTION
0.038" STANDARD STRAIGHT					
MSWSTDS38150	Standard	Straight Tip	0.038" (0.97 mm)	150 cm (59")	
MSWSTDS38180	Standard	Straight Tip	0.038" (0.97 mm)	180 cm (71")	
MSWSTDS38260EX	Standard Exchange	Straight Tip	0.038" (0.97 mm)	260 cm (102")	Exchange
0.038" STIFF ANGLED					
MSWSTFA3880	Stiff	Angled Tip	0.038" (0.97 mm)	80 cm (31.5")	
MSWSTFA38150	Stiff	Angled Tip	0.038" (0.97 mm)	150 cm (59")	
MSWSTFA38180	Stiff	Angled Tip	0.038" (0.97 mm)	180 cm (71")	
0.038" STIFF STRAIGHT					
MSWSTFS38150	Stiff	Straight Tip	0.038" (0.97 mm)	150 cm (59")	
MSWSTFS38180	Stiff	Straight Tip	0.038" (0.97 mm)	180 cm (71")	
0.025" STANDARD ANGLED					
MSWSTDA25150	Standard	Angled Tip	0.025" (0.64 mm)	150 cm (59")	
MSWSTDA25180	Standard	Angled Tip	0.025" (0.64 mm)	180 cm (71")	
MSWSTDA25260EX	Standard Exchange	Angled Tip	0.025" (0.64 mm)	260 cm (102")	Exchange
0.025" STANDARD STRAIGHT					
MSWSTDS25150	Standard	Straight Tip	0.025" (0.64 mm)	150 cm (59")	
MSWSTDS25180	Standard	Straight Tip	0.025" (0.64 mm)	180 cm (71")	
MSWSTDS25260EX	Standard Exchange	Straight Tip	0.025" (0.64 mm)	260 cm (102")	Exchange
0.018" STANDARD ANGLED					
MSWSTDA1880	Standard	Angled Tip	0.018" (0.46 mm)	80 cm (31.5")	
MSWSTDA18150	Standard	Angled Tip	0.018" (0.46 mm)	150 cm (59")	
MSWSTDA18180	Standard	Angled Tip	0.018" (0.46 mm)	180 cm (71")	
MSWSTDA18260EX	Standard Exchange	Angled Tip	0.018" (0.46 mm)	260 cm (102")	Exchange
0.018" STANDARD STRAIGHT					
MSWSTDS18150	Standard	Straight Tip	0.018" (0.46 mm)	150 cm (59")	
MSWSTDS18180	Standard	Straight Tip	0.018" (0.46 mm)	180 cm (71")	
MSWSTDS18260EX	Standard Exchange	Straight Tip	0.018" (0.46 mm)	260 cm (102")	Exchange

1. Test data on file.

Before using refer to Instructions for Use for indications, contraindications, warnings, precautions, and directions for use.



Understand. Innovate. Deliver.™

merit.com

Merit Medical Systems, Inc.
1600 West Merit Parkway
South Jordan, Utah 84095
Main: +1.801.253.1600
Customer Service: +1.801.208.4300

Merit Medical Europe, Middle
East, & Africa (EMEA)
Amerikalaan 42, 6199 AE
Maastricht-Airport
The Netherlands
+31 43 358 82 22

Merit Medical Ireland Ltd.
Parkmore Business Park West
Galway, Ireland
+353 (0) 91 703 733